

Footfall Report for: Canterbury City Centre

Weeks This Month: 4
Weeks Last Month: 4

Monthly Footfall Counts

	Year to date % YoY		This month % YoY		This month % MoM	
	2025	2024	2025	2024	2025	2024
Canterbury City Centre	-13.7%	9.5%	-14.1%	11.3%	1.3%	9.2%
South East	-1.7%	-3.1%	-5.9%	0.5%	-0.8%	5.2%
High Street Index(Historic Town)	-1.4%	-1.2%	-2.8%	0.7%	3.6%	7.4%
UK	0.9%	-1.1%	-1.1%	-1.0%	0.0%	5.1%

Benchmark calculations (Year on Year and Month on Month) have been calculated using like for like data sets (only those counters available in both comparison periods) to ensure statistical accuracy

Headlines

The total number of visitors for the year to date is 3,228,871 which is 13.7% down on the previous year.

The total number of visitors to Canterbury City Centre in month commencing 5 May 2025 was 647,255.

The busiest day in month commencing 5 May 2025 was Saturday 31 May with 32,188 visitors.

The peak hour of the month was 13:00 on Saturday 31 May 2025 with footfall of 3,048.

Footfall Counts by month



■ This Month ■ Previous Year
■ Previous Month ■ 2 Years Ago

Figures shown below are calculated using monthly totals.

Weather



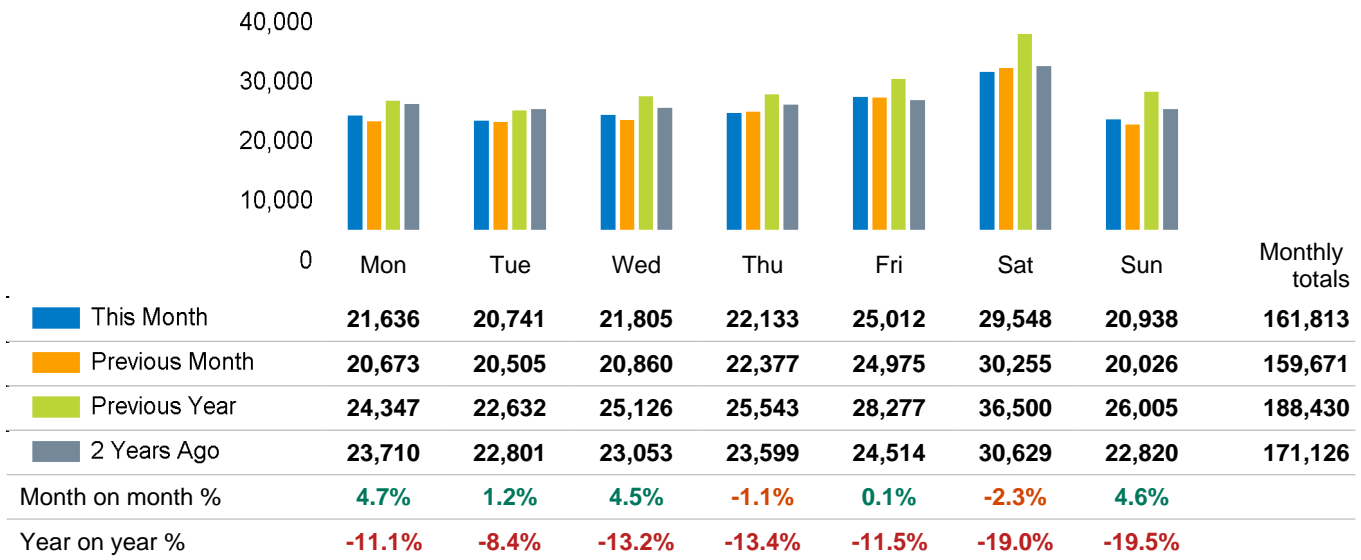
Number of days this month	17	11	
Number of days same month last year	14	11	3
Number of days same month two years ago	16	10	2

Average temperature

	Maximum temperature	Minimum temperature
2025	19°	9°
2024	20°	10°
2023	16°	9°

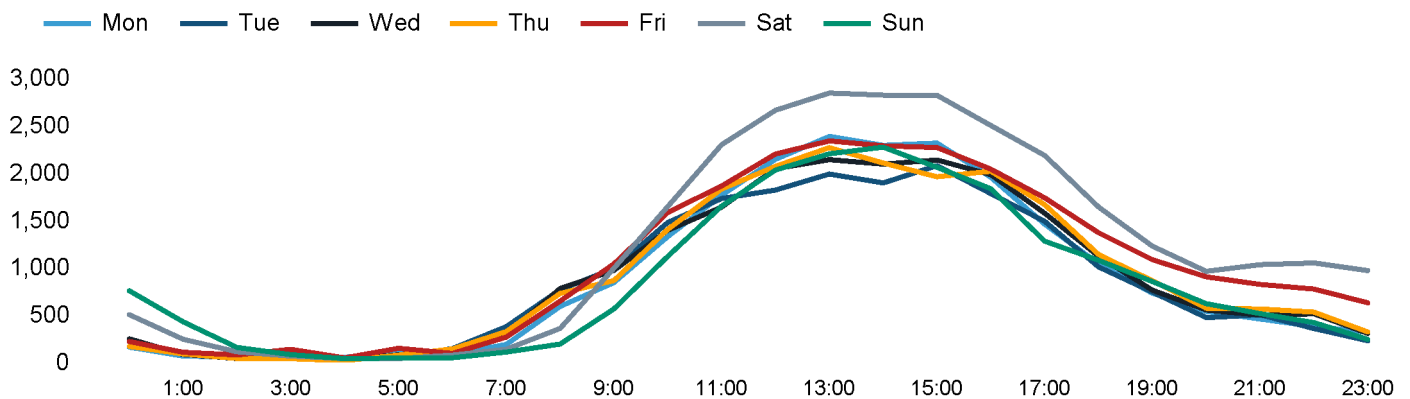
Footfall Counts by day

The figures shown below are calculated using weekly averages.



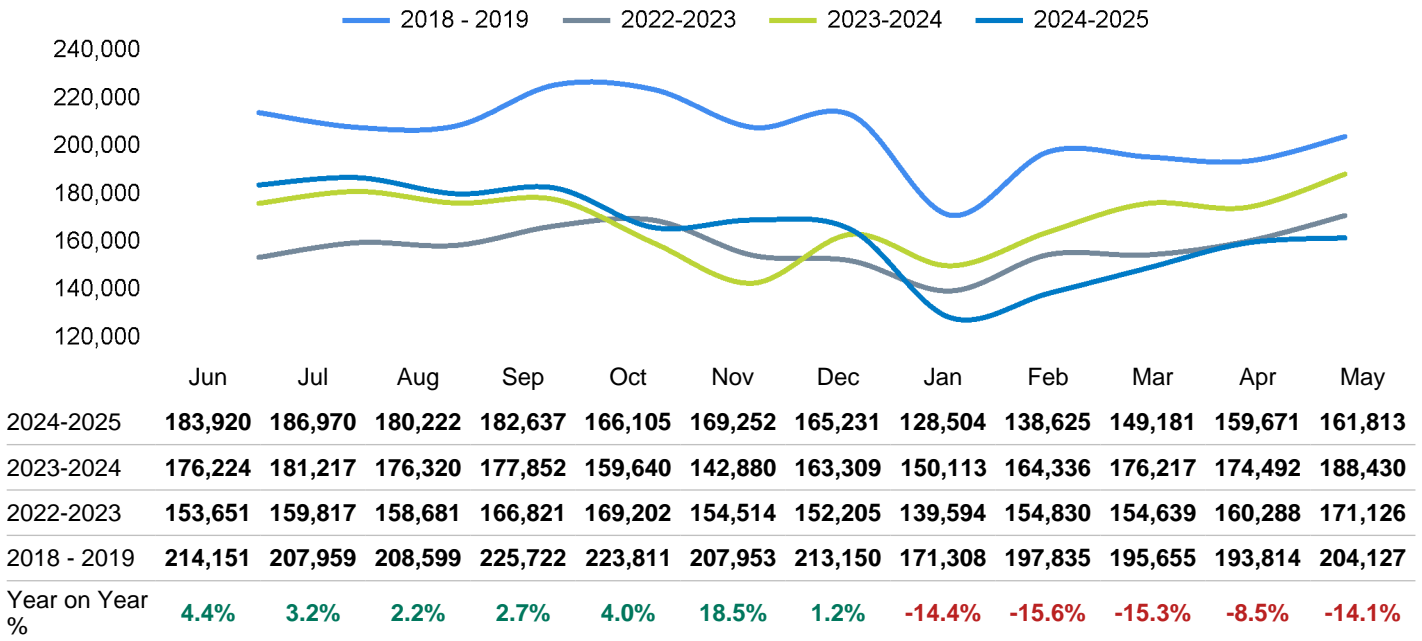
Footfall Counts by hour

The figures shown below are calculated using a weekly average



Footfall Counts - rolling 12 months

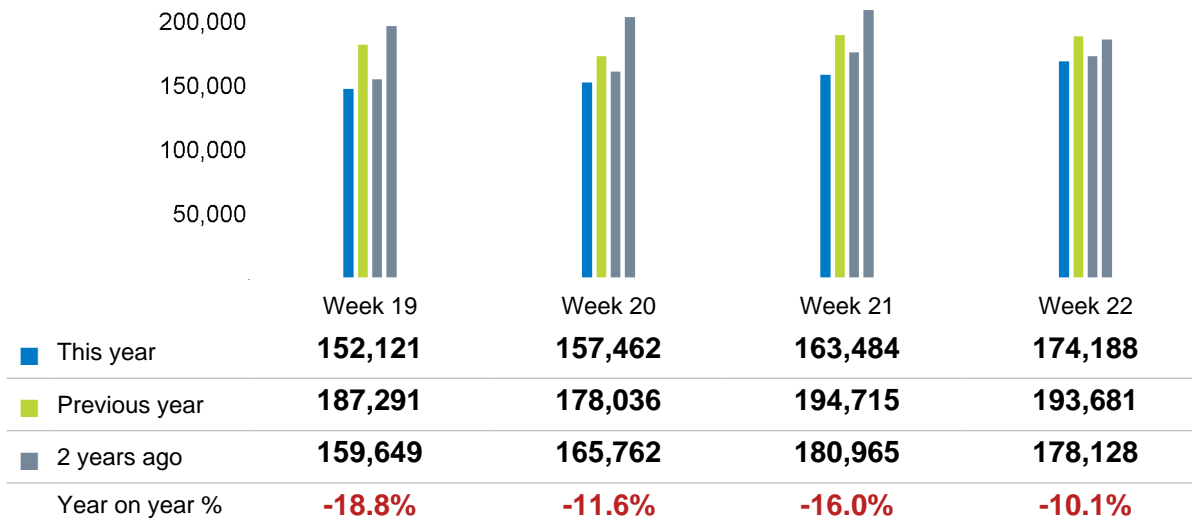
The figures shown below are calculated using weekly averages.



Year on year % is calculated by comparing the 2024-2025 period with the 2023-2024 period i.e the figure for May compares May 2025 to May 2024

Footfall Counts by week of month

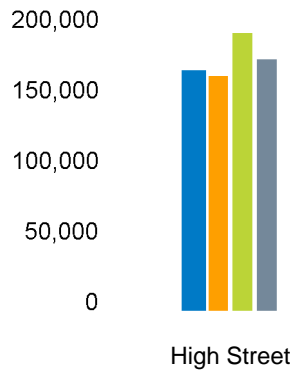
The figures shown below are calculated using weekly totals.



Footfall Counts by location

The figures shown below are calculated using weekly averages.

■ This month ■ Previous month ■ Previous year ■ 2 Years ago



This Month	161,813
Previous Month	159,671
Previous Year	188,430
2 Years Ago	171,126
Year on Year %	-14.1 %



Reporting dates

This month - 05 May 2025 - 01 June 2025

Year to Date % Change is the annual % change in footfall from January of this year compared to the same period last year. January, 2025 to May, 2025 Vs January, 2024 to May, 2024

Year on Year % Change is the % change in footfall for this month compared to the same week in the previous year. May, 2025 Vs May, 2024

Month on Month % Change is the % change in footfall for this Month from the previous Month. 5 2025 Vs 4 2025

